

## KEEP YOUR PROJECTS ON TRACK

The better the project is planned, the better the odds your project will be successful. As projects become increasingly complex and deadlines are tightening, the requirement for a project planning software is becoming an incontestable competitive advantage.

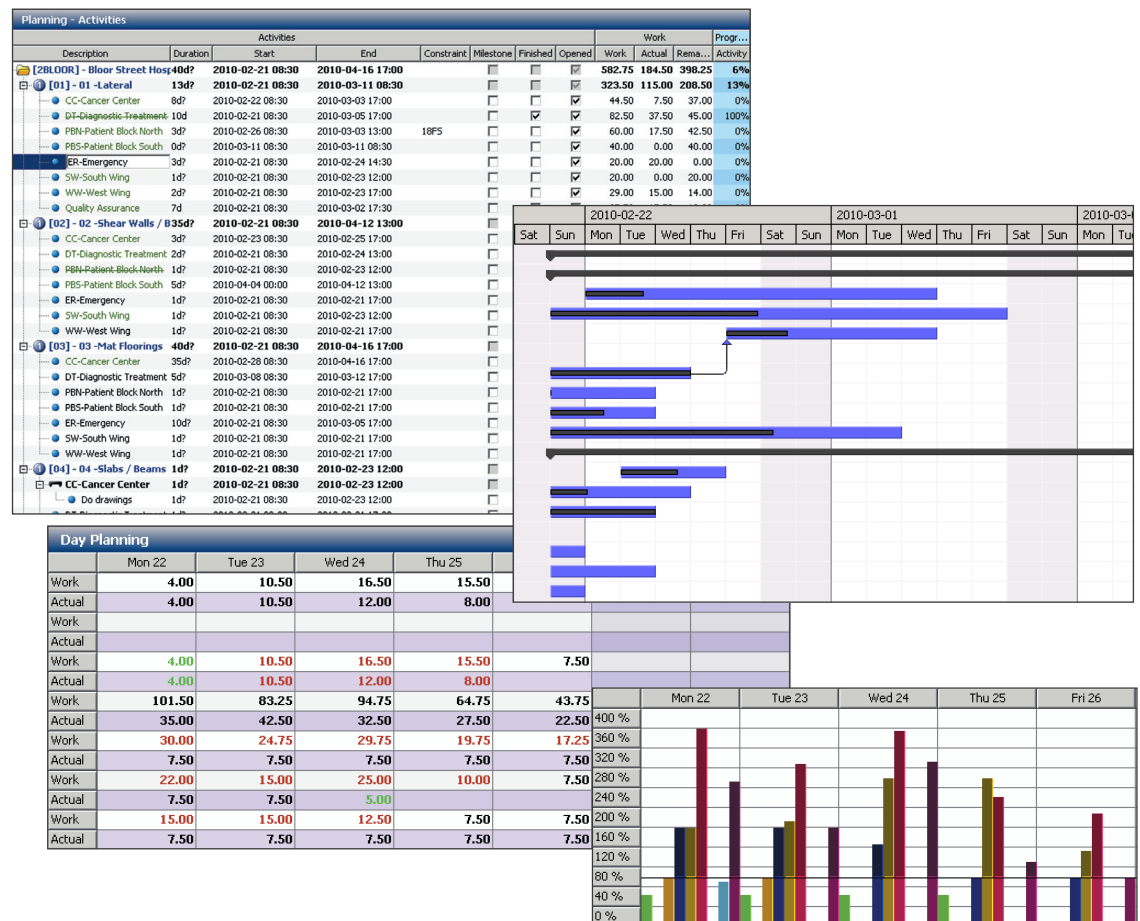
by offering a variety of different options to define the project activities, milestones and constraints. These views equally provide information that is organized and structured to help your Project Managers make timely decisions.

Project Suite's Resource Planning module enables your Project Managers to plan projects and allocate resources to the tasks that need to be scheduled over a fixed period of time. Project progress is monitored and tracked by comparing estimated to actual completion percentages.

Your management team will benefit from consolidated dashboards and other views help track multiple projects simultaneously.

Project Suite's Resource Planning module is fully integrated to TEDI and Microsoft Dynamics GP to help connect the organizational and administrative aspects of your projects.

To complete the various project tasks, different views enable the planning and control of a project



## Overview

Resource Planning enables Project Managers track projects in real time allowing for quick responses to schedule changes and potentially reducing cost overruns.

Automatically creates entries and calculates time within an employees' timesheets once they have been assigned to a specific project. Calculations are based on the completion date of the project, percentage of time already charged and the number of resources assigned to the project.

Top features include:

**Flexible** employee assignment to project tasks within timesheets and Outlook

**Adaptable** resources scheduling to better manage capacity

**Assorted** views with Gantt charts, budgets-to-actuals and variance reporting

# Features

<b>Calendar management</b>	<p>Project Managers can monitor various company calendars from their portfolio to their project or resource.</p> <p>The various managed calendars are:</p> <ul style="list-style-type: none"><li>• Company calendar</li><li>• Department calendar</li><li>• Project calendar</li><li>• Resource calendar</li></ul>
<b>Planning and Monitoring View</b>	<p>The <b>planning view</b> allows project leaders to define various elements of a project by:</p> <ul style="list-style-type: none"><li>• Activity</li><li>• Milestone</li><li>• Relationships between various activities</li></ul> <p>The <b>monitoring view</b> enables Project Managers to plan their various resources and to monitor progress in real time.</p> <p>Top features:</p> <ul style="list-style-type: none"><li>• Task hierarchy</li><li>• Gantt chart</li><li>• Information on resources</li><li>• Details of hours for each resource</li></ul>
<b>Utilization and Resource View</b>	<p>The Utilization and Resources view allows project leaders to assess the workload of the following groups:</p> <ul style="list-style-type: none"><li>• Departments</li><li>• Sites</li><li>• Production units</li><li>• One or more employees at a time</li></ul> <p>This view gives project leaders access to information on:</p> <ul style="list-style-type: none"><li>• Tasks (according to the selected group)</li><li>• Scheduled and/or actual time for each date</li><li>• Details of resources according to the group selected for the tasks</li><li>• Utilization in hours or in percentages of the resources selected</li></ul>
<b>Consolidation View</b>	<p>This view gives Project Managers access to multi-project information by:</p> <ul style="list-style-type: none"><li>• Division</li><li>• Department</li><li>• Employee class</li><li>• Production unit</li></ul>
<b>Integration</b>	<ul style="list-style-type: none"><li>• JOVACO - Project Control</li><li>• JOVACO - Time &amp; Expense (TEDI)</li></ul>

6555 E. Metropolitan Blvd  
Montreal (Qc) CANADA H1P 3H3  
1-888-988-3535 / 514-323-3535  
solutions@jovaco.com  
www.jovaco.com

IMPACT  
AWARDS  
Finalist



**JOVACO** Solutions

2010 Microsoft Dynamics  
ISV of the Year Finalist  
Canada

Microsoft Partner



Gold Enterprise Resource Planning  
Silver Customer Relationship Management  
Silver Data Platform